



ILLINOIS STATE UNIVERSITY

Illinois' first public university

Aligning Learning Outcomes with Curricula & Programs

Derek Herrmann Meyers & Ryan Smith

University Assessment Services

February 15 & 16, 2017

Center for Teaching, Learning, and Technology Resource Commons



**ILLINOIS STATE
UNIVERSITY**

Illinois' first public university

Today's Agenda

What is the role of learning outcomes in curricula?

How do I align learning outcomes, assessment activities, and curricula?



**ILLINOIS STATE
UNIVERSITY**

Illinois' first public university

Curriculum

What is a curriculum?

What should a curriculum include?

What does a good curriculum look like?



ILLINOIS STATE
UNIVERSITY

Illinois' first public university

Alignment & Curriculum Mapping

A tool for aligning courses with goals or outcomes, or intentions with actions.

It can also be used to document what happened.

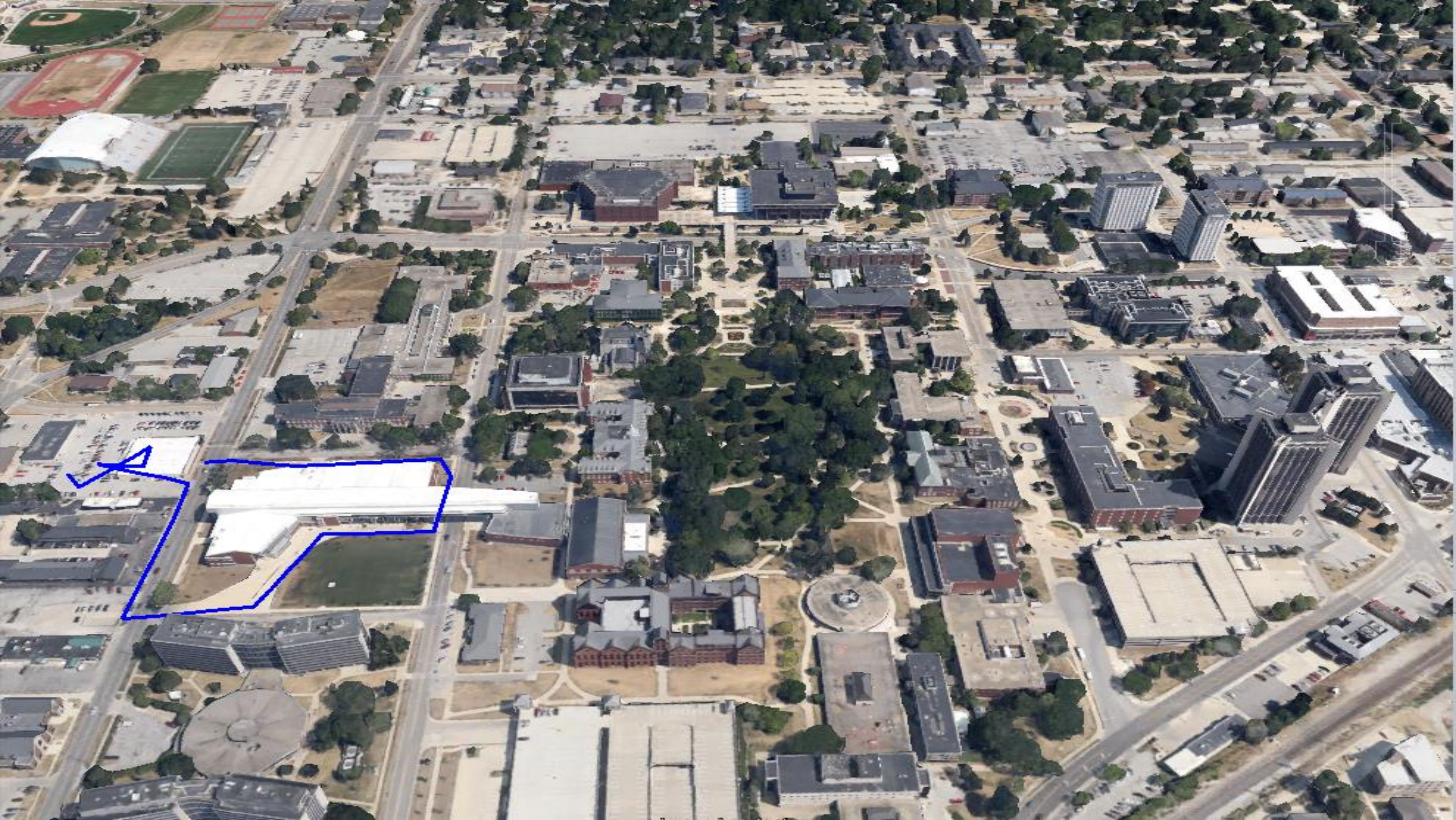
What Questions Does Alignment Address?

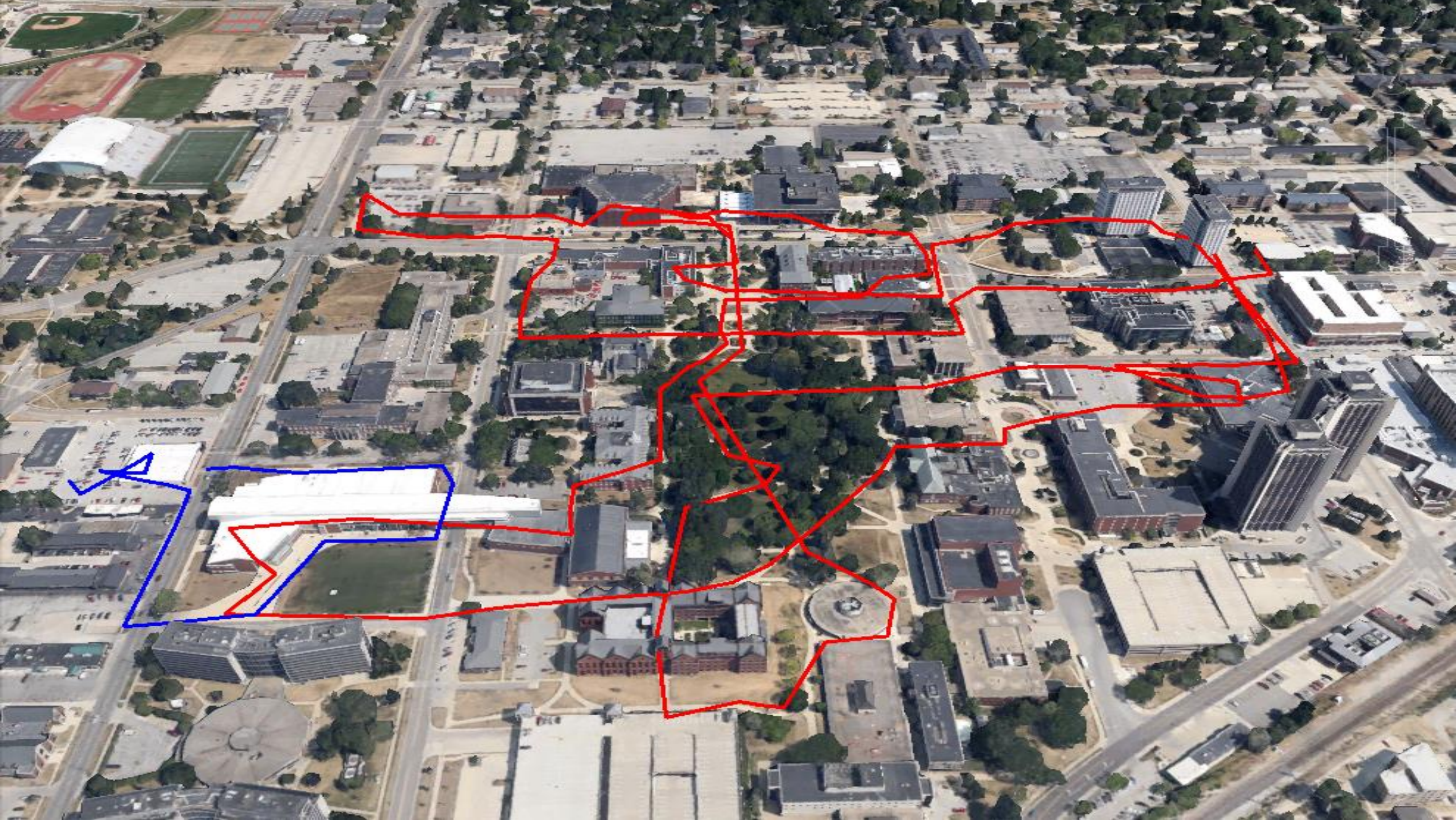
Where in the program do students have the opportunity to learn?

Where in the program will outcomes be assessed?

Do students have the opportunity to learn an outcome or topic regardless of the instructor?







Simple Matrix Curriculum Map

Common Courses	GOALS OR OUTCOMES			
	Goal 1	Goal 2	Goal 3	Goal 4
111	X			X
138		X	X	
200	X			X
231		X	X	X
331	X		X	
340		X		X
392	X	X	X	X



**ILLINOIS STATE
UNIVERSITY**
Illinois' first public university

Simple Matrix Co-curriculum Map

Units	GOALS OR OUTCOMES			
	Identity Development	Health & Wellness	Civic Responsibility	Global Awareness
Campus Dining	X	X		X
Campus Housing		X		
Campus Recreation		X		
Student Organizations			X	X
Student Health Services		X		
Career Center	X			



ILLINOIS STATE UNIVERSITY
Illinois' first public university

Embedded Assessment Curriculum Maps

Assessments in Cells

COMMON PROGRAM COURSES	OUTCOMES			
	Outcome 1: Analyze and identify materials from which historical period they are made	Outcome 2: Analyze the conservation needs of an object	Outcome 3: Design and administer a museum budget.	Outcome 4: Develop appropriate research skills
Art History 101	Common Exam questions			
Art History 110		Common Exam questions	Common Exam questions	
Internship		Museum Admin. Evaluation	Museum Admin. Evaluation	
Attendance at college art events	Term Paper			Term Paper
Art History 490: senior capstone	Final Project Rubric		Final Project Rubric	Final Project Rubric



Embedded Assessment Curriculum Maps

Activities in Cells

COMMON PROGRAM ASSESSMENT	OUTCOMES			
	Outcome 1: Analyze and identify materials from which historical period they are made	Outcome 2: Analyze the conservation needs of an object	Outcome 3: Design and administer a museum budget.	Outcome 4: Develop appropriate research skills
Common Exam Questions	AH 101	AH 110	AH 110	
Museum Admin. Eval.		Internship	Internship	
Term Paper	College art events			College art events
Final Project Rubric	AH 490		AH 490	AH 490



Embedded Assessment Co-curriculum Maps

Student Affairs

Units	OUTCOMES			
	Identity Development	Health & Wellness	Civic Responsibility	Global Awareness
Campus Dining		Healthy Eating Initiative Evaluation		
Campus Housing	EBI Survey	EBI Survey		EBI Survey
Campus Recreation	Leadership Survey (Adv. Programs)	Tracking Use		
Student Organizations	NSSE		Program Evaluation	
Student Health Services		Patient Satisfaction and Follow-up Surveys		



ILLINOIS STATE UNIVERSITY
Illinois' first public university

Level of Skill & Knowledge Maps

Common Courses and Experiences	Program Learning Outcomes			
	Apply the scientific method	Develop laboratory techniques	Diagram and explain major cellular processes	Awareness of careers and job opportunities in biological sciences
BIOL 101	Introduced	Introduced		Introduced
BIOL 202	Developed	Developed	Introduced	
BIOL 303	Developed	Developed Mastered	Developed	
BIOL 404	Mastered		Mastered	Developed
Other: Exit interview				Assessed



Level of Skill & Knowledge Maps

Student Affairs

Units	OUTCOMES			
	Identity Development	Health & Wellness	Civic Responsibility	Global Awareness
Campus Dining	Low Emphasis	High Emphasis	Medium Emphasis	Low Emphasis
Campus Housing	High Emphasis	High Emphasis	Low Emphasis	Low Emphasis
Campus Recreation	Medium Emphasis	High Emphasis	Low Emphasis	Low Emphasis
Student Organizations	Medium Emphasis	Medium Emphasis	High Emphasis	Low Emphasis
Student Health Services	Low Emphasis	High Emphasis	Low Emphasis	Low Emphasis
Campus Quidditch Program	Low Emphasis	Low Emphasis	Low Emphasis	Low Emphasis



**ILLINOIS STATE
UNIVERSITY**
Illinois' first public university

Reading the Map

COMMON PROGRAM COURSES & ACTIVITIES	OUTCOMES			
	Outcome 1: Analyze and identify materials from which historical period they are made	Outcome 2: Analyze the conservation needs of an object	Outcome 3: Design and administer a museum budget.	Outcome 4: Develop appropriate research skills
Art History 101	X	X		X
Art History 110	X	X		
Internship	X			X
Attendance at college art events				
Art History 490: senior capstone		X		X

Art events do not align with any outcomes – should the program keep doing it?



ILLINOIS STATE UNIVERSITY
Illinois' first public university

- Budgeting never covered:
1. Include in curriculum
 2. Remove as an outcome

Reading the Map

Courses and Experiences	Program Learning Outcomes			
	Apply the scientific method	Develop laboratory techniques	Diagram and explain major cellular processes	Awareness of careers and job opportunities in biological sciences
BIOL 101	Introduced			Introduced
BIOL 202	Developed		Introduced	
BIOL 303	Developed			
BIOL 404	Mastered		Mastered	
BIOL 454		Mastered		

↓
Students are never introduced to the topic, but expected to master it

↓
Students are never given an opportunity to practice the skill

↓
Students are introduced to the topic, but never given the opportunity to practice or master it



ILLINOIS STATE UNIVERSITY
Illinois' first public university

Reading the Map

Student Affairs

Units	OUTCOMES			
	Identity Development	Health & Wellness	Civic Responsibility	Global Awareness
Campus Dining		Healthy Eating Initiative Evaluation		
Campus Housing	EBI Survey	EBI Survey		EBI Survey
Campus Recreation	Leadership Survey (Adv. Programs)	Tracking Use		
Student Organizations	NSSE			
Student Health Services		Patient Satisfaction and Follow-up Surveys		

Social Media Use Survey

Annual Textbook Cost Survey



ILLINOIS STATE UNIVERSITY
Illinois' first public university

Suggestions

Emphasize that alignment is not about standardization.

Engage in dialog with colleagues.

Realize that maps take time and are continuous (wikimaps).

Share maps with students.



Benefits

Clarifies relationship between teaching and learning

Helps plan in the context of outcomes, as opposed to activities or processes

Helps develop ideas for new activities or new program implementation

Helps eliminate unproductive or unhelpful activities or assessments

Shows faculty and staff how their area contributes to what students learn

Fosters collegiality, sharing, and dialog



**ILLINOIS STATE
UNIVERSITY**
Illinois' first public university